



INSTRUCTIONS & PARTS LIST FOR 1410, 1412, 1420, & 1422 DRILL UPGRADE

This kit will upgrade Serial "B" tools to Serial "C" style. It includes all parts necessary for this conversion. Find the number you received below and refer to illustration for reference.

SP67254 and SP67771 carriers.

Kit replaces figures 2, 3, 4, 6, 7, and 11 (8, 9, 10, and 12 are retained).

SP67770 and SP67772 planetary assembly.

Kit replaces figures 2, 3, 4, and 5.

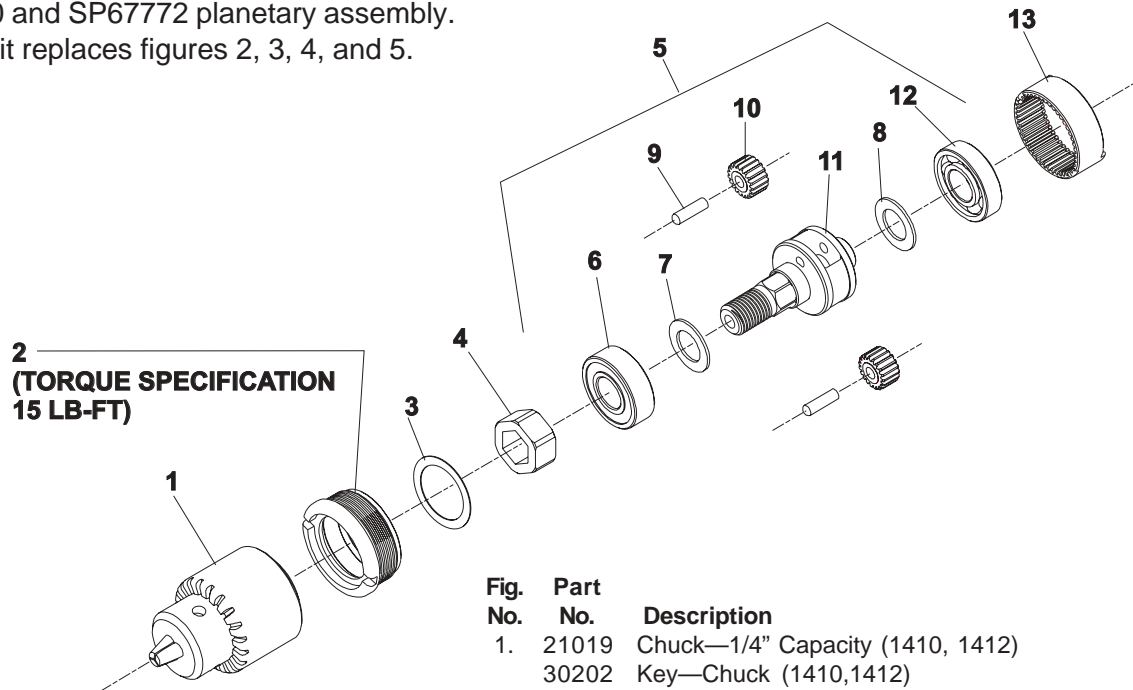


Fig. No.	Part No.	Description
1.	21019	Chuck—1/4" Capacity (1410, 1412)
	30202	Key—Chuck (1410,1412)
	21077	Chuck—1/4" Capacity (1410A)
	30000	Key—Chuck (1410A)
2.	67217	Retainer
3.	67552	Washer—Spring Wave
4.	67940	Spacer—Hex
5.	67946	Assembly—Planetary Reduction (1410) (Includes Figures 6 thru 12)
	67947	Assembly—Planetary Reduction (1412) (Includes Figures 6 thru 12)
6.	67216	Bearing—Ball
7.	67215	Washer
8.	25680	Washer
9.	30453	Pin (2)*
10.	19212	Gear—Idler (1410)(2)*
	19195	Gear—Idler (1412)(2)*
11.	67938	Carrier—Gear (1410)
	67939	Carrier—Gear (1412)
12.	10241	Bearing—Ball
13.	19189	Gear—Ring

* Order Quantity As Needed

**SIoux™
TOOLS INC.**

Furnish Catalog, Serial, and Model Number When Ordering Parts